



PENNSYLVANIA

ECONOMY LEAGUE

Information, Insight, Integrity.

PALMYRA AREA

SCHOOL DISTRICT

Overview

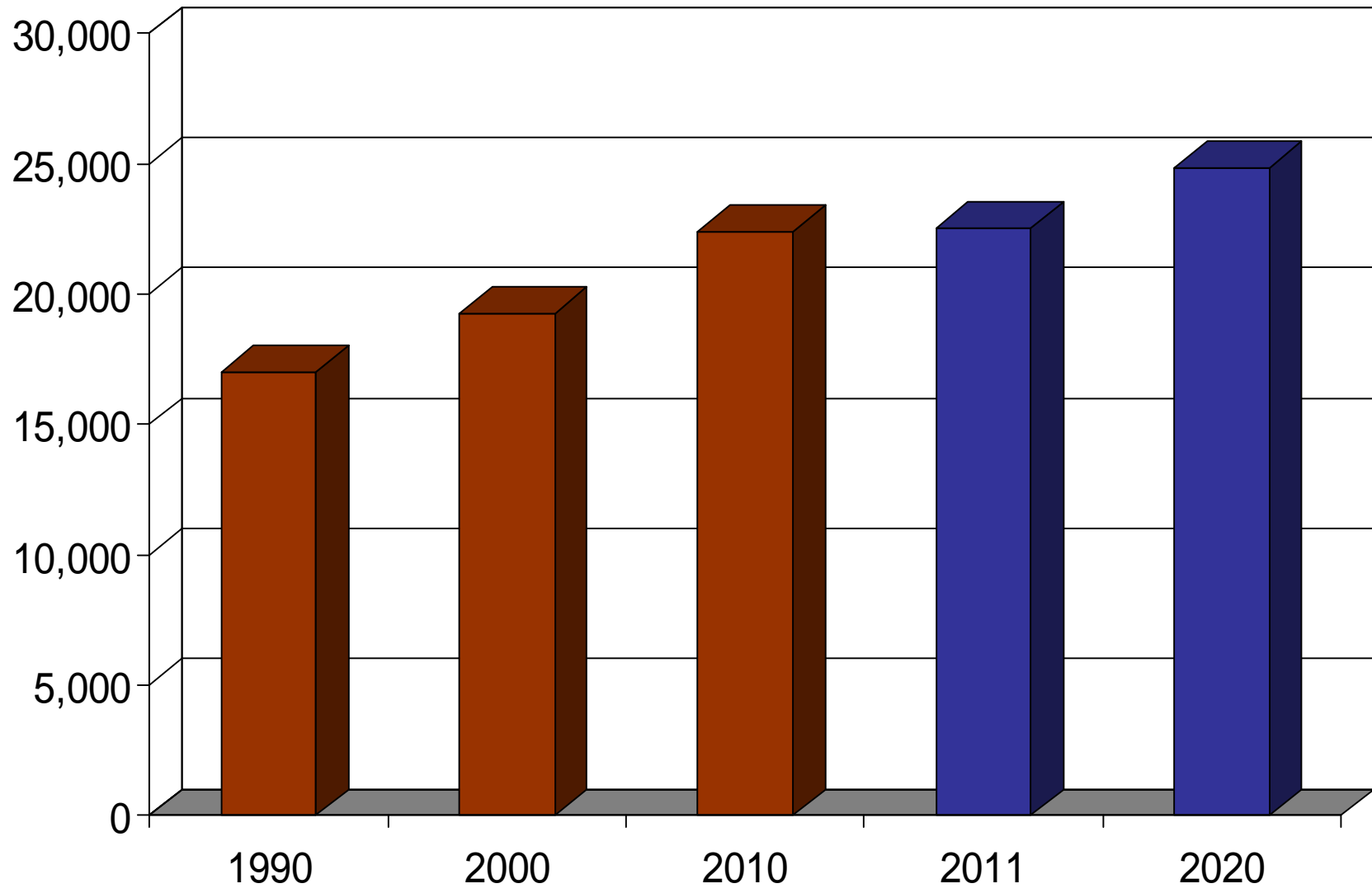
Goal: Project public school enrollments

Purpose: Informed decision making

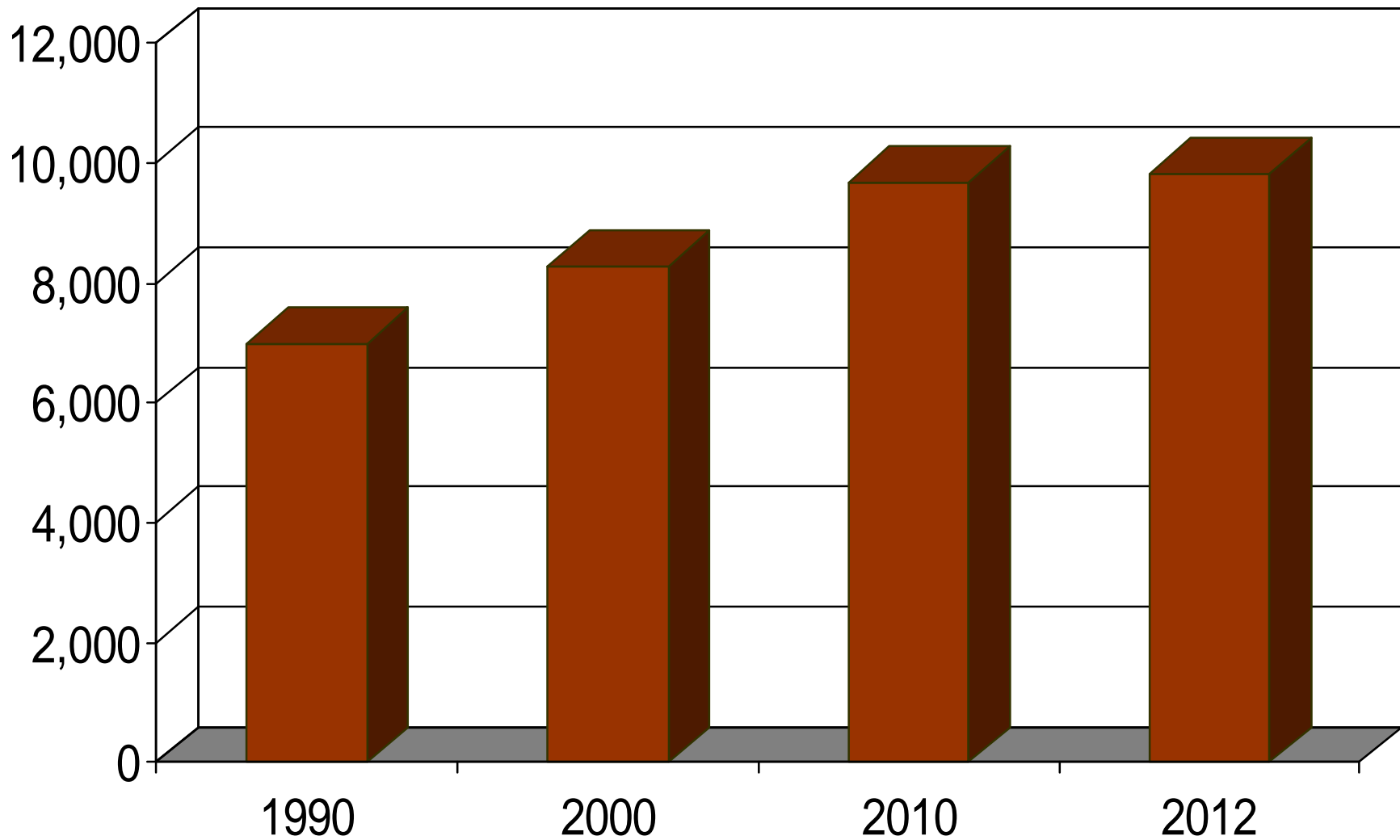
Process:

- Review population, births and enrollments
- Analyze community development activity
- Assess various relationships/indicators
- Develop model and generate projections

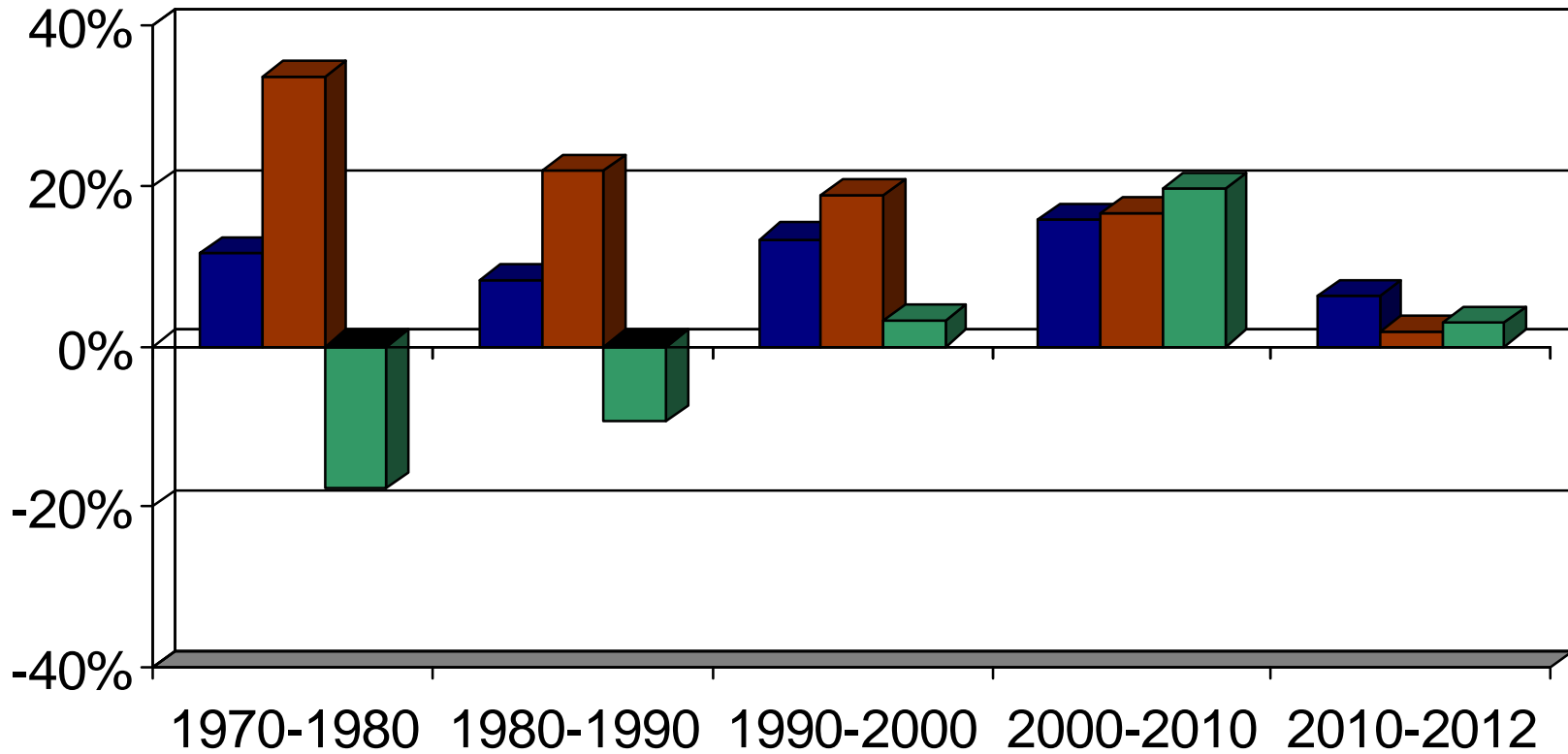
Population Trends



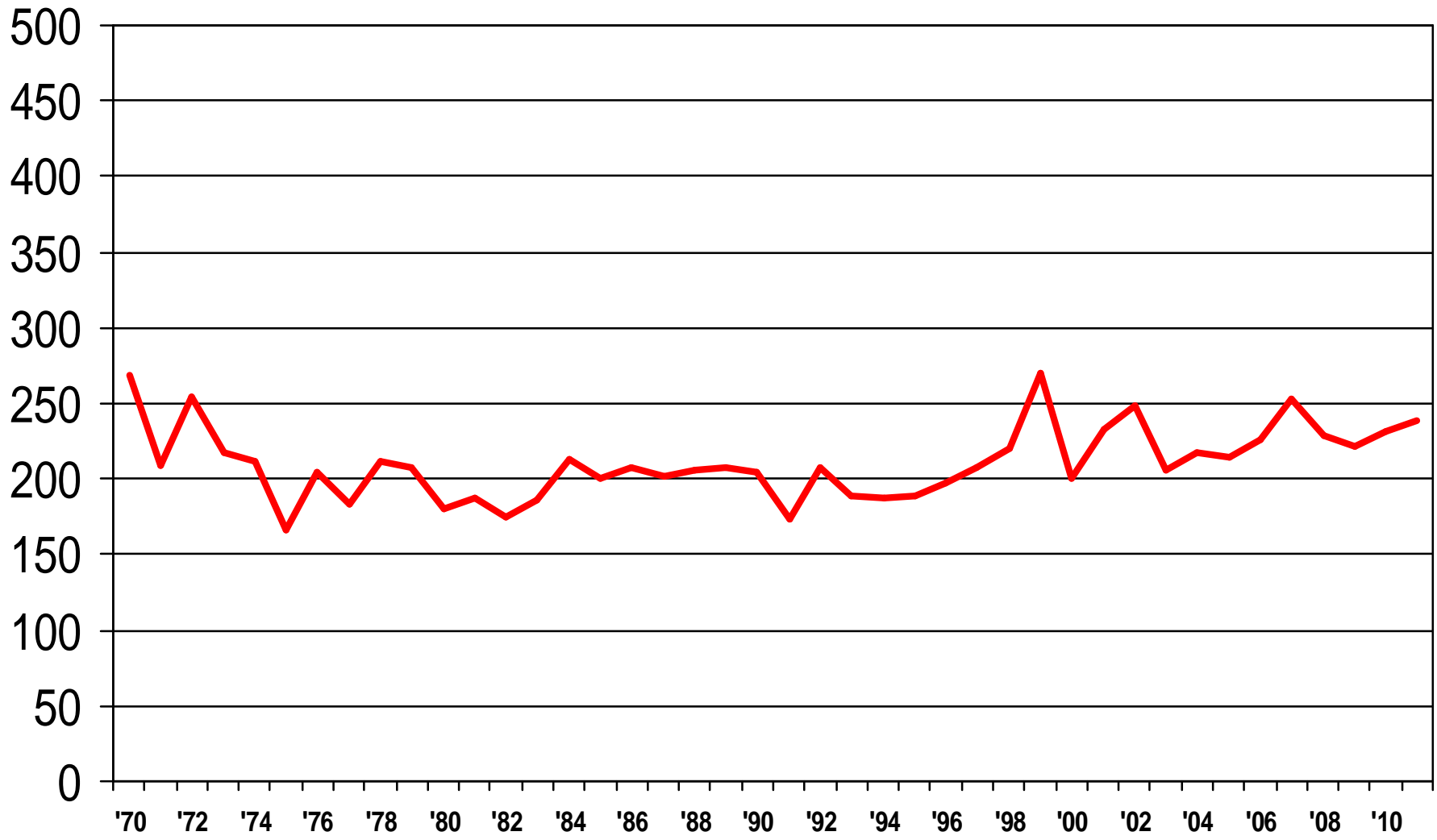
Total Housing Units



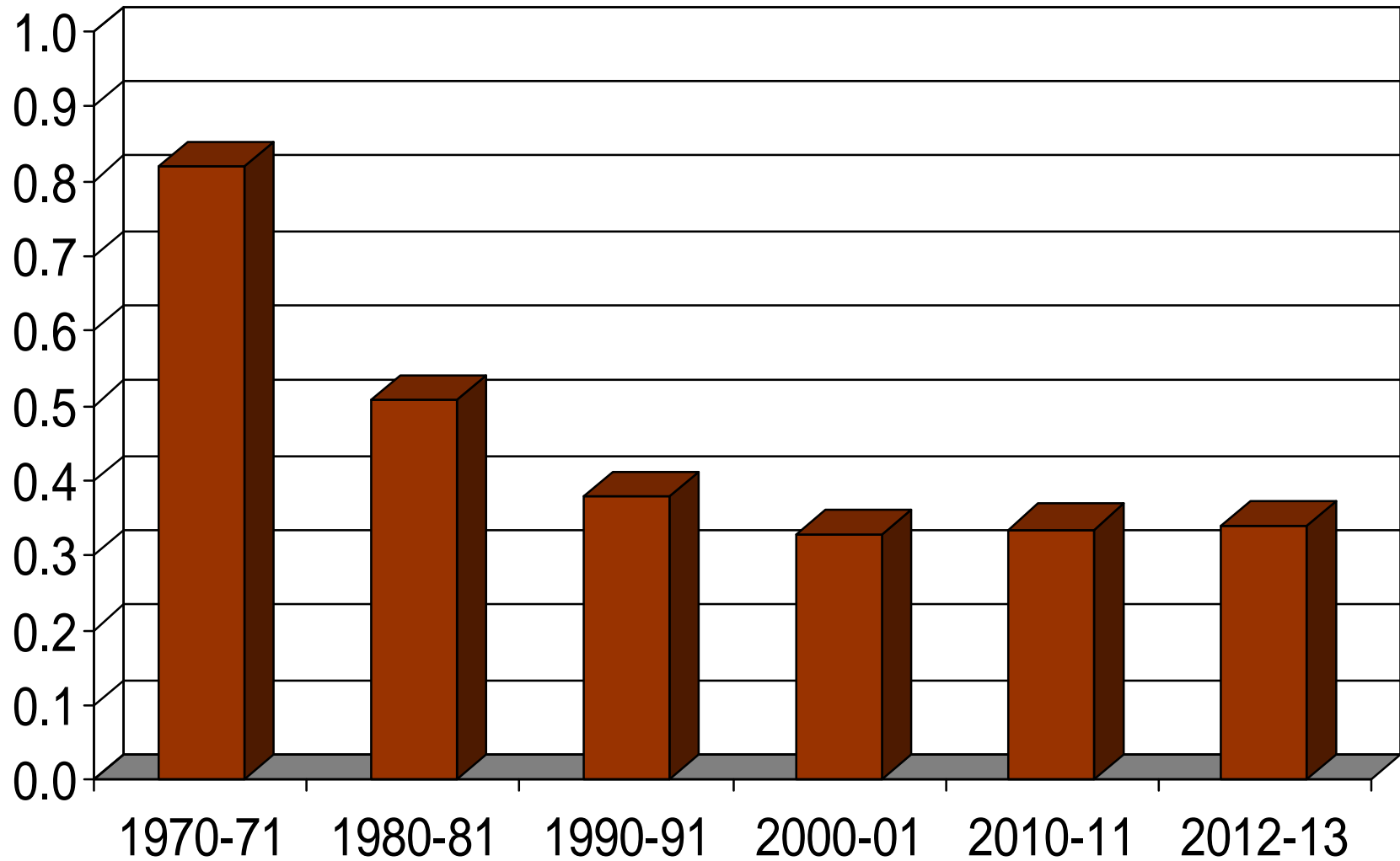
Population, Housing Units & Enrollments



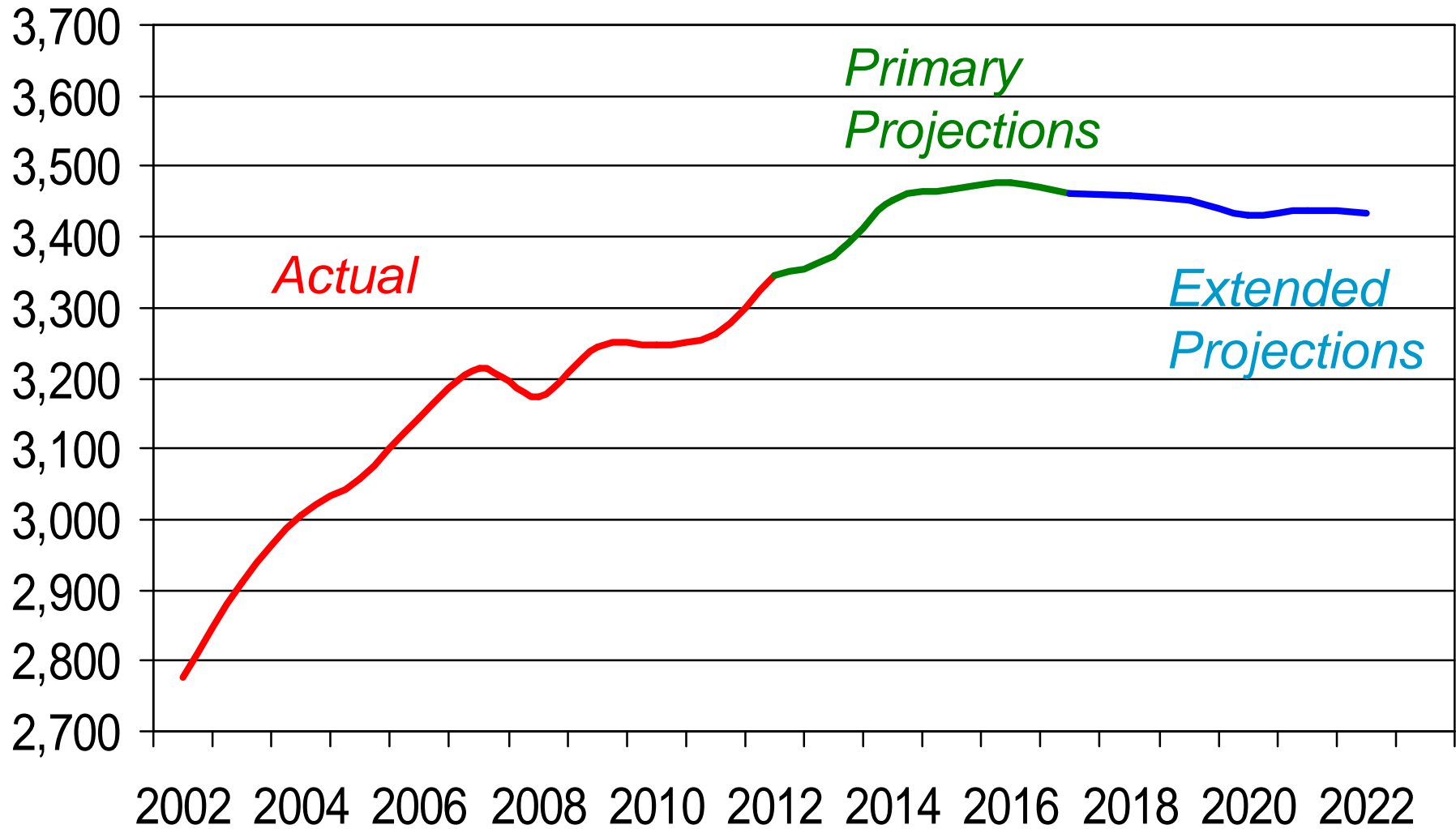
Births



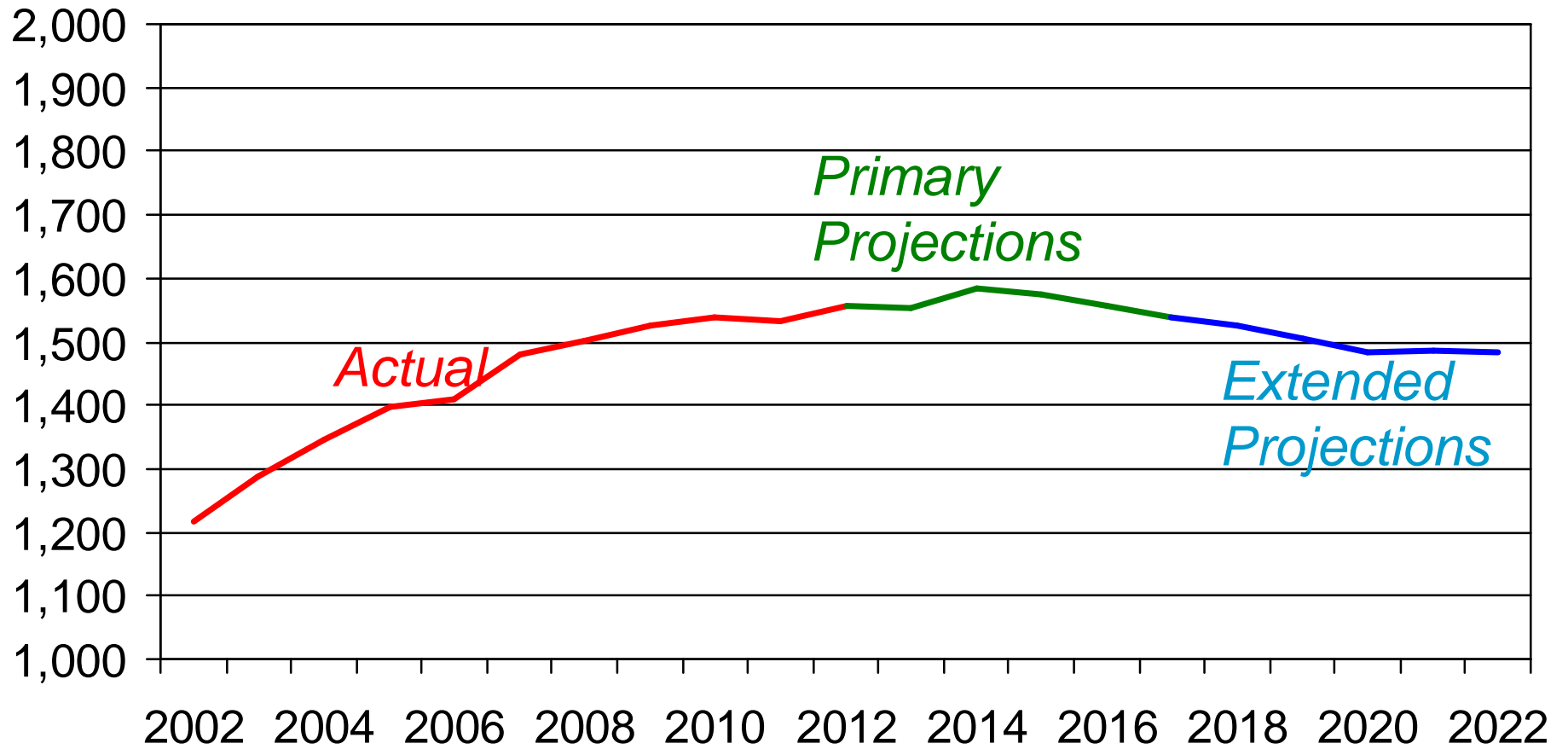
Pupils Per Housing Unit



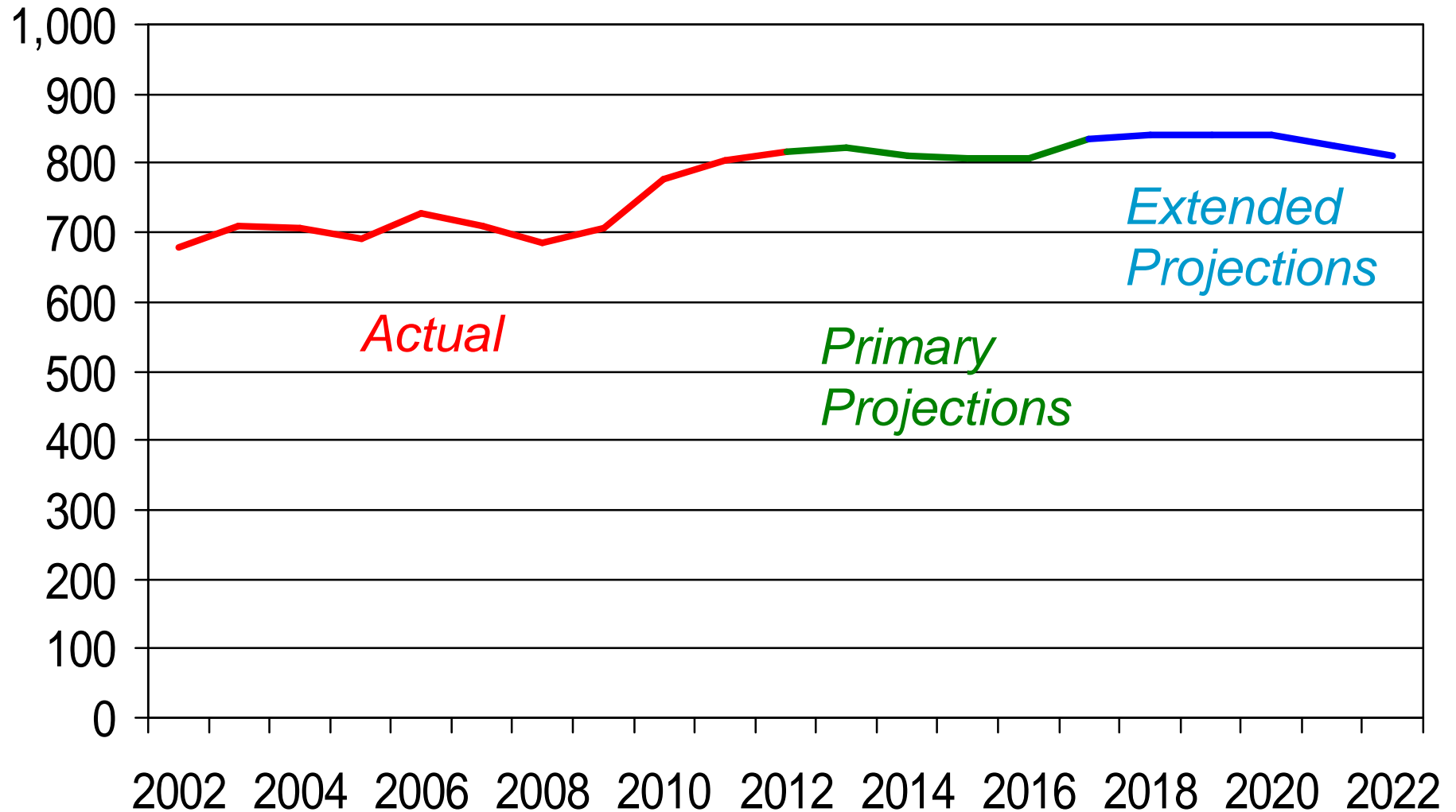
Total Enrollments



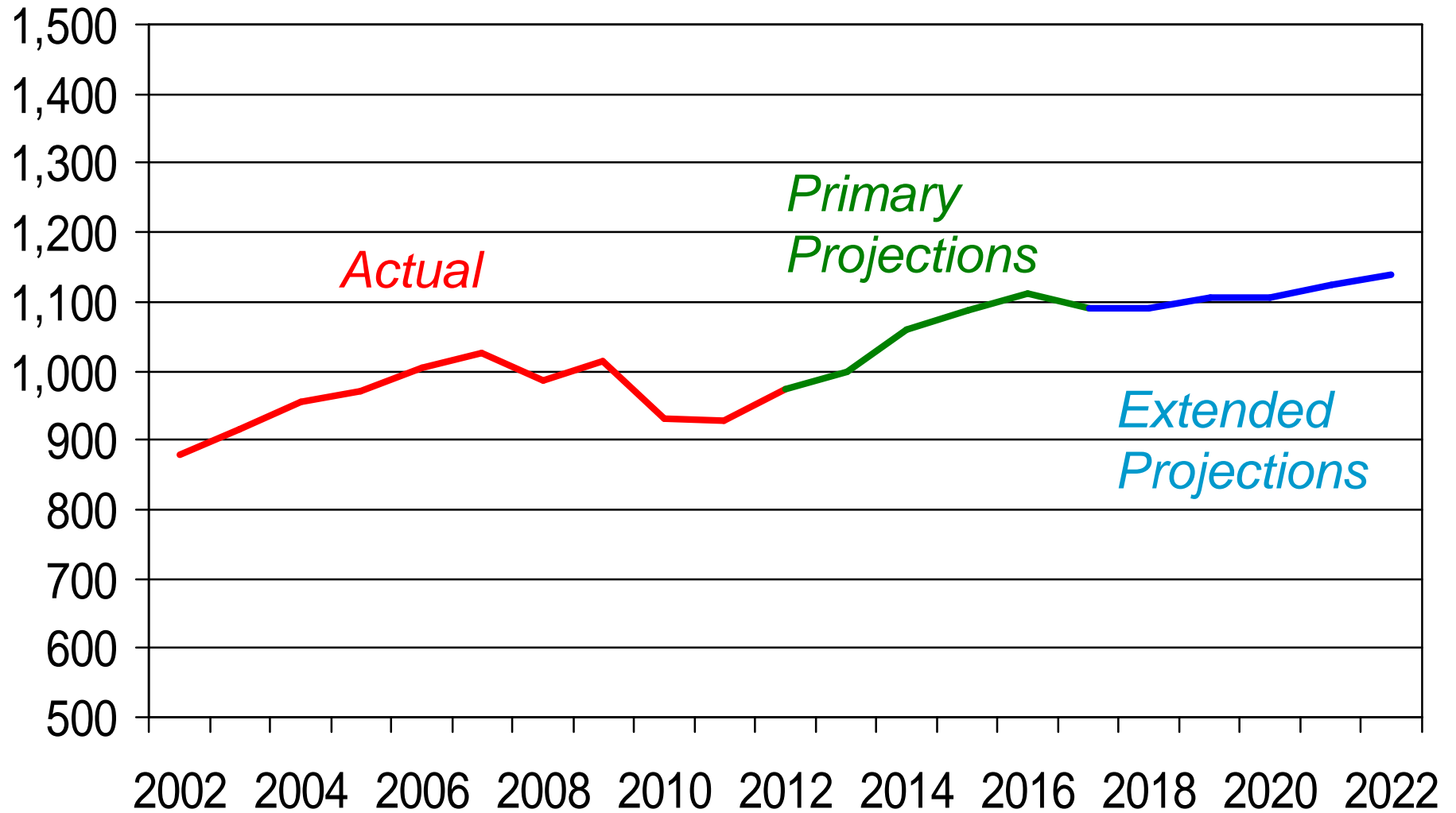
Elementary Enrollments (K-5)



Middle School Enrollments (6-8)



High School Enrollments (9-12)



Closing Comments

- Accuracy
- Uncertain Events
- Ongoing Monitoring ... Early Warning
- Words of Caution
- Reasonable and Realistic Projections



PENNSYLVANIA

ECONOMY LEAGUE

Information, Insight, Integrity.